

# Quick Reference Guide

Be sure to first read the "Important Safety Instructions" in the Product Safety Guide.  
Refer to the Operation Manual (PDF version on the CD or printed version) for detailed instructions.

\* In addition, the Operation Manual can be downloaded from the Brother Solutions Center (<http://support.brother.com>).

- Use a blade and mat combination appropriate for the material to be cut, as indicated in the following table.  
(Depending on your machine model, additional purchases may be required.) In addition, adjust the blade extension and cutting pressure.

## Mat Selection

This table provides general guidelines. Before making your project, test attaching the same material.

Material and its thickness		Mat			Sheet for fabric cutting	
		Standard mat (purple and turquoise)	Middle tack adhesive mat (pink and turquoise)	Low tack adhesive mat (turquoise)	Iron-on fabric appliqué contact sheet (white backing)	High tack adhesive fabric support sheet
Paper	Printer paper	80 g/m <sup>2</sup> (0.1 mm)	✓	✓		
	Scrapbook paper (thin)	120 g/m <sup>2</sup> (0.15 mm)	✓	✓		
	Scrapbook paper (medium-thick)	200 g/m <sup>2</sup> (0.25 mm)	✓	✓		
	Cardstock (thin)	200 g/m <sup>2</sup> (0.25 mm)	✓	✓		
	Cardstock (medium-thick)	280 g/m <sup>2</sup> (0.35 mm)	✓	✓		
	Vellum, tracing paper	0.07 mm	✓	✓		
	Poster board (thin)	280 g/m <sup>2</sup> (0.35 mm)	✓	✓		
	Poster board (thick)	400 g/m <sup>2</sup> (0.5 mm)	✓	✓		
	Thin cotton fabric (for quilt piece)	0.25 mm	✓			✓
	Thin cotton fabric (except for quilt piece)	0.25 mm	✓		✓	
Fabric	Flannel (for quilt piece)	0.6 mm	✓			✓
	Flannel (except for quilt piece)	0.6 mm	✓		✓	
	Felt	1 mm	✓		✓	
	Denim 14 oz	0.75 mm	✓		✓	
	Plastic sheet (PP)	0.2 mm	✓	✓		
Others	Vinyl	0.2 mm	✓	✓		
	Magnet	0.3 mm	✓	✓		
	Sticker or seal	0.2 mm	✓	✓		

## Attaching the Material to the Mat

### Note

- Craft paper or fabric covered with decorative layer (that can easily separate) such as lamé or foil is not recommended. If such media is used or tested it is recommended to clean the scanner glass at the bottom of the machine after every use.

### With Fabric

After referring to the table above, use a sheet for fabric cutting. Refer to the instructions included with the above sheet for details.

Iron-on fabric appliqué contact sheet:

- Reinforces the fabric so that various patterns can be cut out.
- Original texture may change because it remains attached to the back of fabric.

\* For use with the standard mat. Do not place fabric backed with iron-on contact sheet directly onto a mat with high tack fabric support sheet.

High tack adhesive fabric support sheet:

- By attaching this adhesive sheet to the standard mat, the adhesive strength of the mat is increased.
- Depending on the shape, the pattern may not be cleanly cut.

### With Paper

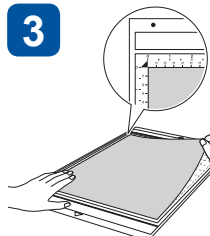
1



Peel off the protective sheet.

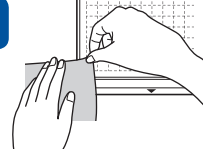
- Do not discard the protective sheet peeled off the mat.
- In order to maintain the adhesive strength, attach the protective sheet to the adhesive side of the mat after use.

3



Attach the material to the mat's adhesive side.

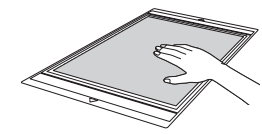
2



Before attaching the material to the mat, use a corner of the adhesive side of the mat to test attaching it.

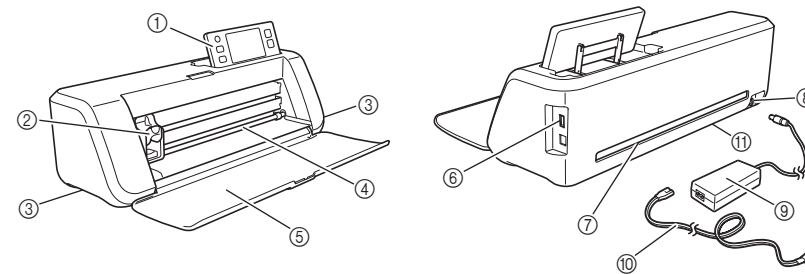
- Use the low tack adhesive mat with copy paper and smooth paper. Since the standard mat has a high adhesive strength, materials may remain stuck to the mat, causing the mat to become unusable.

4



Firmly attach all of the material to the mat. \* Make sure that there are no wrinkles and no part can curl off.

## The Main Parts



- 1 Operation Panel
- 2 Carriage
- 3 Handles
- 4 Feed Slot
- 5 Front Tray Cover
- 6 USB port (for a USB flash drive)
- 7 Slot
- 8 DC Power Jack
- 9 AC Adapter
- 10 AC Power Cord
- 11 Scanner Glass (Bottom of Machine)

## Blade (Holder)

This table provides general guidelines. Before making your project, perform trial cutting with the same material.

Material and its thickness		Blade scale setting	Cut pressure setting	Cutting blade	
				Standard cut blade (turquoise)	Deep cut blade (purple)
Paper	Printer paper	80 g/m <sup>2</sup> (0.1 mm)	3	-1	✓
	Scrapbook paper (thin)	120 g/m <sup>2</sup> (0.15 mm)	3.5	0	✓
	Scrapbook paper (medium-thick)	200 g/m <sup>2</sup> (0.25 mm)	4	0	✓
	Cardstock (thin)	200 g/m <sup>2</sup> (0.25 mm)	4	0	✓
	Cardstock (medium-thick)	280 g/m <sup>2</sup> (0.35 mm)	5	0	✓
	Vellum, tracing paper	0.07 mm	3	0	✓
	Poster board (thin)	280 g/m <sup>2</sup> (0.35 mm)	5.5	0	✓
	Poster board (thick)	400 g/m <sup>2</sup> (0.5 mm)	7.5	4	✓
	Thin cotton fabric (for quilt piece)	0.25 mm	4	4	✓
	Thin cotton fabric (except for quilt piece)	0.25 mm	4	4	✓
Fabric	Flannel (for quilt piece)	0.6 mm	6.5	4	✓
	Flannel (except for quilt piece)	0.6 mm	6.5	4	✓
	Felt	1 mm	5	5	✓
	Denim 14 oz	0.75 mm	5.5	6	✓
Others	Plastic sheet (PP)	0.2 mm	4	0	✓
	Vinyl	0.2 mm	4	0	✓
	Magnet	0.3 mm	5.5	0	✓
	Sticker or seal	0.2 mm	4	0	✓

## Adjusting the Blade Extension



Remove the protective cap.

- After use, be sure to retract the blade into the holder and attach the protective cap.

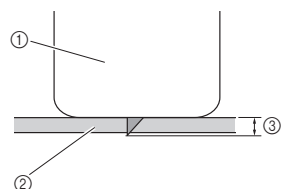
Fully turn the cap to the right to extend the blade tip to its maximum.

### Note

- After adjusting the blade extension, perform trial cutting (Refer to the back of this sheet).

After referring to the table above, set the blade extension to the indicated setting.

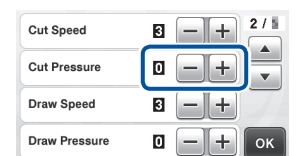
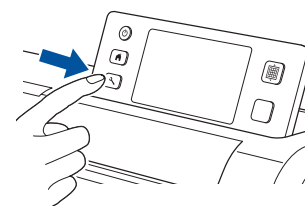
- If the material is not cut cleanly, even after adjusting the setting, increase the setting in increments of 0.5. If material is cut after increasing the setting by more than 0.5, too much of the blade may be extended, causing it to break. If the blade breaks, it may no longer be able to cut.



- 1 End of holder cap
- 2 Material that will be cut
- 3 Length of blade tip
- \* The blade can cut even though it only slightly extends from the holder. If too much of the blade extends, it may break.

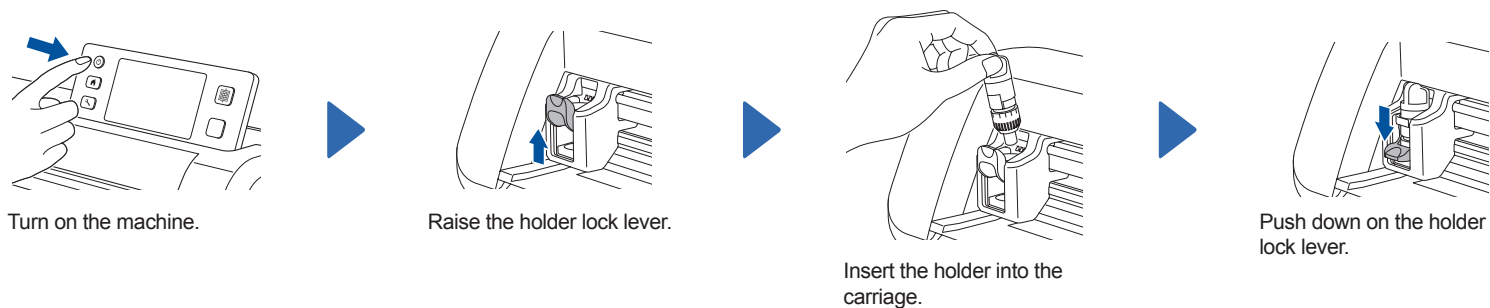
## Adjusting the Cut Pressure

- If the material is not cut cleanly, even after adjusting the blade extension, add more cutting pressure.

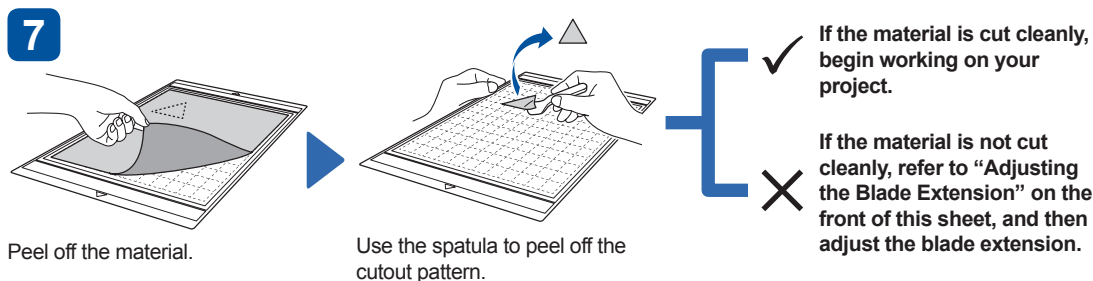
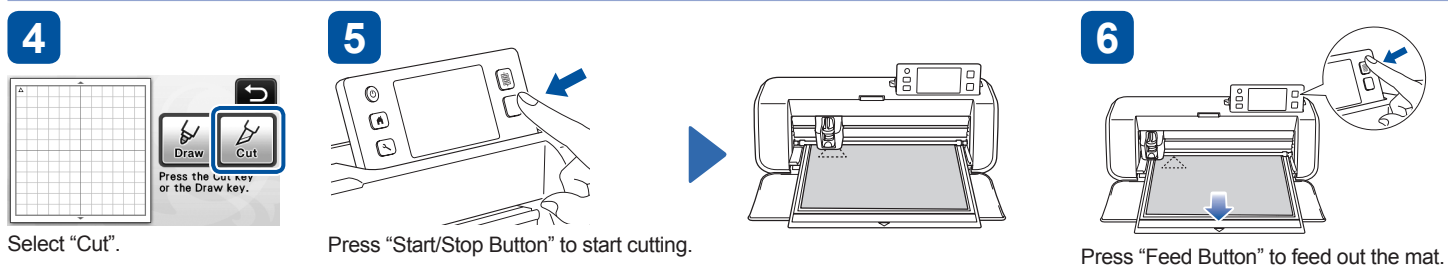
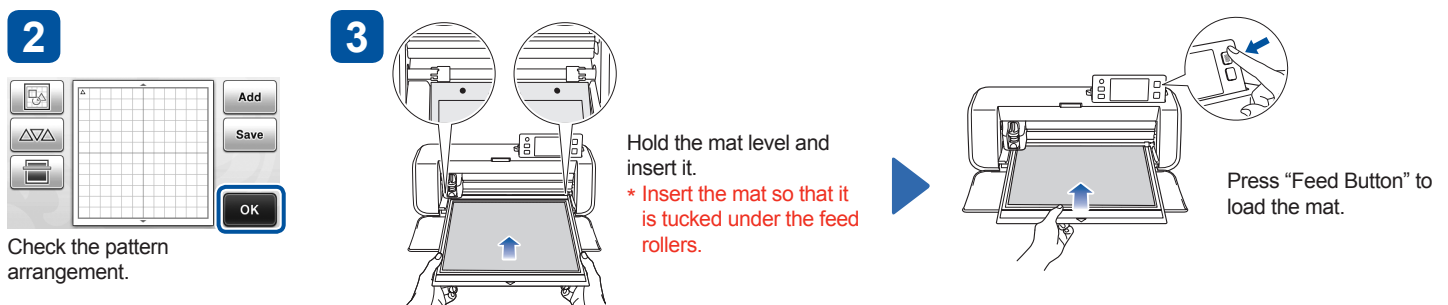
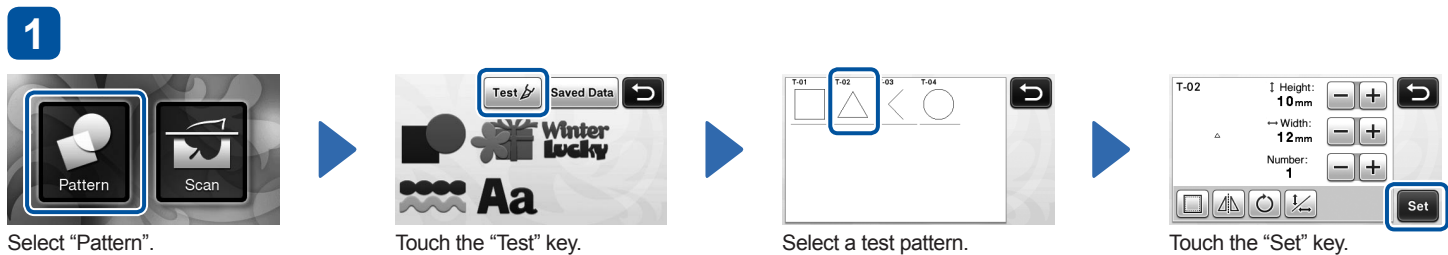


XG3382-101①

## Installing the Holder

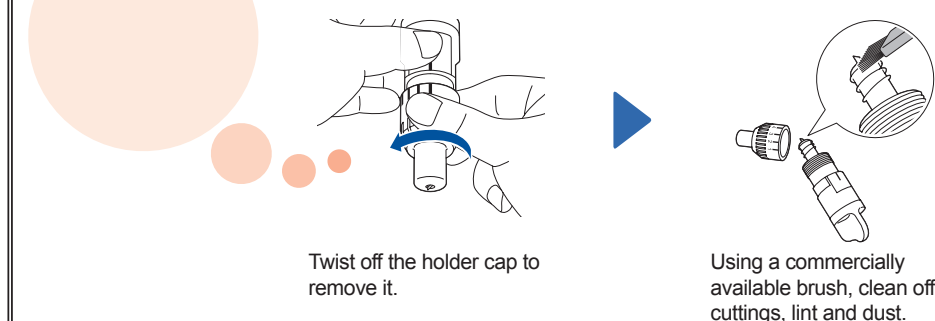


## Trial Cutting



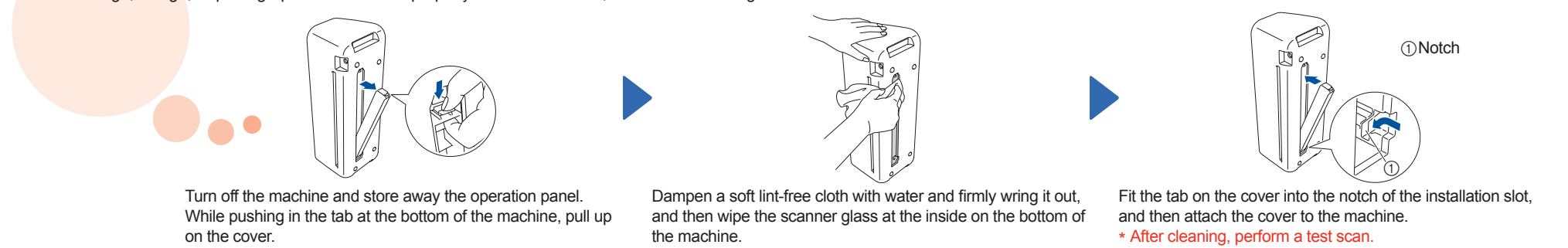
## Cleaning the Holder

Clean the holder after every use.

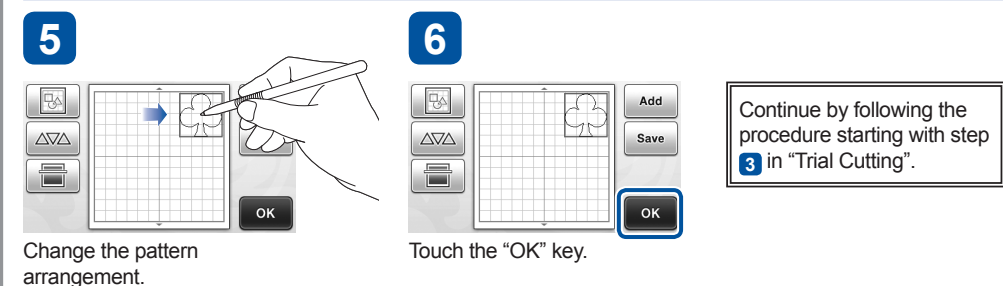
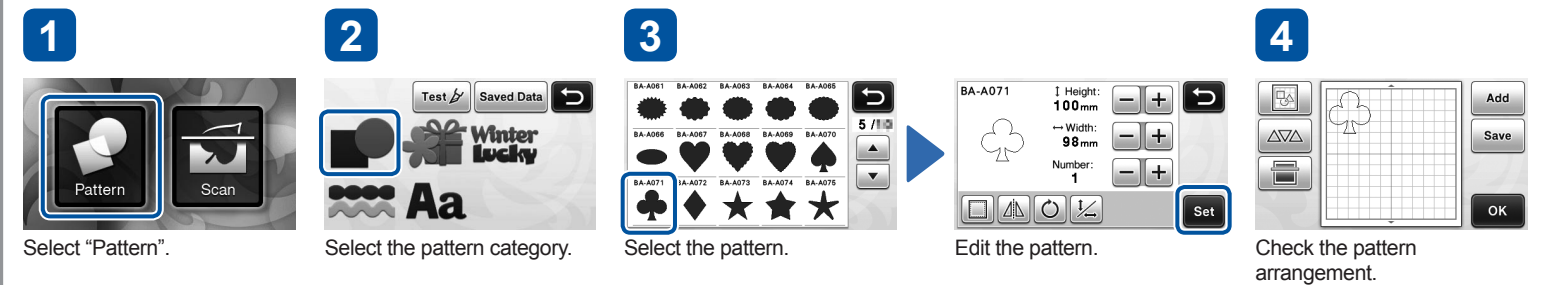


## Cleaning the Scanner Glass

If the image, design, or photograph does not scan properly to create cut data, clean the scanner glass.



## Cutting a Selected Pattern (Clover)



## Using "Direct Cut" Mode to Cut a Pattern Drawn on Material

