

Be sure to first read the "Important Safety Instructions" in the Product Safety Guide. This Quick Reference Guide contains basic instructions and information for your Brother machine. Store this Quick Reference Guide in a safe place, where it can be easily accessed for future reference.

**Refer to the Operation Manual for detailed instructions.**  
The Operation Manual as well as other instructions can be downloaded from the Brother Solutions Center (<http://s.brother/cmoae/>).



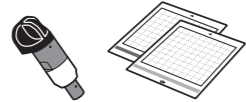
## STEP 1 Mat and Blade Selection

1



Prepare the material to be cut.

2



Referring to the following table, select a mat and blade appropriate for the material.

### Memo

- An auto blade holder is included with this machine. Using the auto blade holder, the thickness of the material is detected, and the blade extension automatically adjusts based on the material's thickness.
- Use the mat designed specifically for ScanNCut DX.
- Depending on your machine model, some accessories may not be included. Additional purchase may be required.

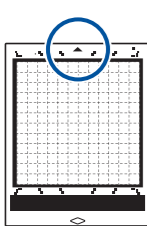
		Mat (for ScanNCut DX)		Sheet for fabric cutting		Auto blade holder	
		Standard Tack Adhesive Mat	Low Tack Adhesive Mat	Iron-on Fabric Appliqué Contact Sheet (White Backing)	High Tack Adhesive Fabric Support Sheet	Auto Blade (Black)	Thin Fabric Auto Blade (Beige)
Paper	Printer paper	80 g/m <sup>2</sup> (0.1 mm)	✓			✓	
	Scrapbook paper (thin)	120 g/m <sup>2</sup> (0.15 mm)	✓			✓	
	Scrapbook paper (medium-thick)	200 g/m <sup>2</sup> (0.25 mm)	✓			✓	
	Cardstock	280 g/m <sup>2</sup> (0.35 mm)	✓			✓	
	Vellum, tracing paper	0.07 mm	✓			✓	
	Poster board	400 g/m <sup>2</sup> (0.5 mm)	✓			✓	
Fabric	Thin cotton fabric (for quilt piece)	0.25 mm	✓		✓	✓	✓
	Thin cotton fabric (except for quilt piece)	0.25 mm	✓	✓		✓	
	Flannel (for quilt piece)	0.5 mm	✓		✓	✓	✓
	Flannel (except for quilt piece)	0.5 mm	✓	✓		✓	
	Felt	3 mm	✓	✓		✓	
	Denim 14 oz	0.75 mm	✓	✓		✓	
Others	Plastic sheet (PP)	0.2 mm	✓			✓	
	Vinyl	0.2 mm	✓			✓	
	Magnet	0.3 mm	✓			✓	
	Sticker or seal	0.2 mm	✓			✓	
	Foam sheet	3 mm	✓			✓	

## STEP 2 Attach the Material to the Mat

### Note

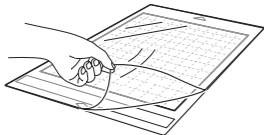
- Craft paper or fabric covered with decorative layer (that can easily separate) such as lamé or foil is not recommended for use. If such media is used or tested it is recommended to clean the scanner glass inside the machine after every use.

1



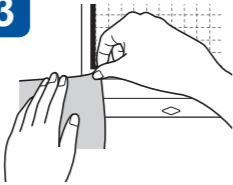
Make sure that the arrow is facing the machine feeder (top side up).

2



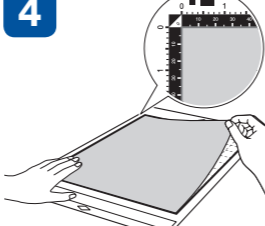
Peel off the protective sheet.  
\*Keep the protective sheet for storage use.

3



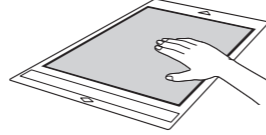
Before attaching your choice of material onto the mat, check if the strength of the adhesive is suitable by test attaching the material onto the edge of the adhesive side of the mat.

4



If the adhesive is ok, attach the material onto the mat's adhesive.

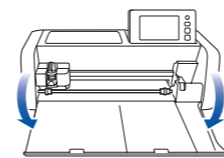
5



Apply some pressure to firmly attach the material onto the mat.

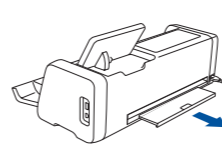
## STEP 3 Install the Holder

1



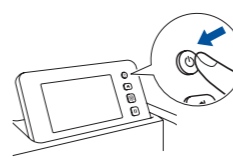
Connect the power cord to the machine, and then open the front tray cover.

2



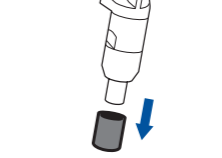
Pull out the rear tray.

3



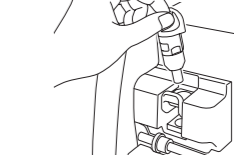
Turn on the machine.

4

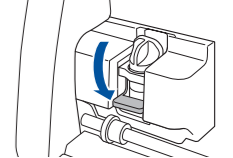


Remove the protective cap.

5



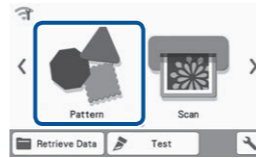
Hold the blade holder and then install it in the carriage with the Brother Logo facing you.



Press down the holder lock lever.

## STEP 4 Select the Pattern

1



Select "Pattern".

2



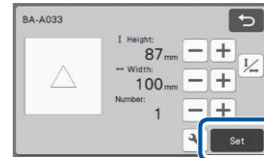
Select your choice of pattern category.

3



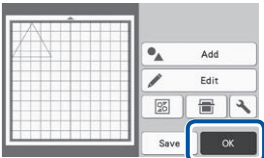
Select your choice of pattern.

4



Check the pattern size and number of pattern(s), and then touch the "Set" key.

5



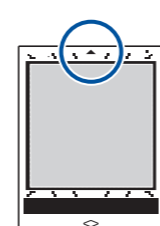
Check the pattern(s) placement, and then touch the "OK" key.

### Note

- We recommend performing "Test/Trial Cut" before cutting your project. Please refer to "Test/Trial Cut (For Desired Cutting Results)" on the next page.

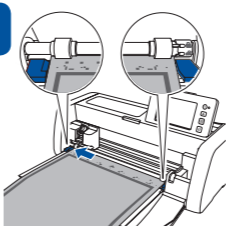
## STEP 5 Load the Mat and Start Cutting

1



Load the mat (arrow facing up).

2



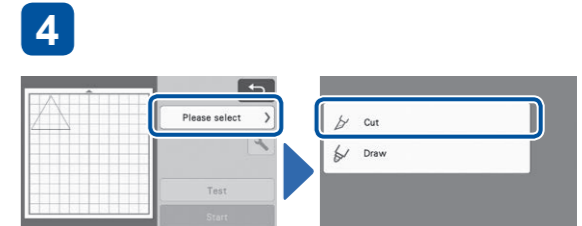
For smooth feeding, align the top of the mat with the guides on the right and left sides of the feed slot and insert it under the feed rollers.

3



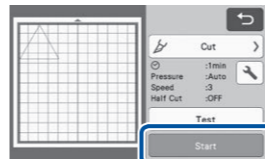
Lightly place your hand on the center of the mat and gently push it forward while pressing the "Feed" button on the operation panel.

4



Touch "Please select" key then select "Cut" in the preview screen.

5



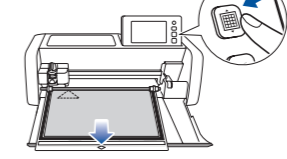
Touch the "Start" key to start cutting.

6



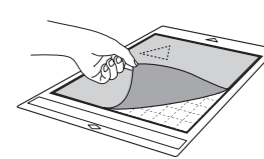
When cutting is finished, touch the "OK" key on the screen.

7



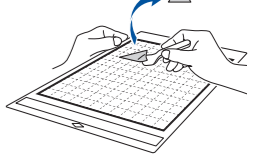
Press the "Feed" button in the operation panel to release the mat.

8



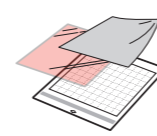
Peel off the material.

9



Use the spatula to peel off the cutout pattern.  
\*After using a mat, cover it with the protective sheet.

## Fabric Cutting Basics



Refer to the "Mat and Blade Selection" table, and use an iron-on fabric appliqué contact sheet or a high tack adhesive fabric support sheet to cut fabric. Refer to the instructions included with the iron-on fabric appliqué contact sheet or high tack adhesive fabric support sheet for details. If these accessories are not included with your machine, purchase the optional iron-on fabric appliqué contact sheet (CASTBL1) or high tack adhesive fabric support sheet (CASTBL2).

### Iron-on fabric appliqué contact sheet

- Reinforces the fabric so that various patterns can be cut out.
- Original texture may change because it remains attached to the back of the fabric.
- \* Use the standard mat. Do not place fabric with an iron-on fabric appliqué contact sheet attached to the back directly onto a mat with a high tack adhesive fabric support sheet attached.

### High tack adhesive fabric support sheet

- By attaching this adhesive sheet to the standard mat, the adhesive strength of the mat will increase.
- Cut results may vary depending on the shape of the selected pattern.

■ Scanning Functions

Scan an illustration, photo or your own drawing to create personalized cut designs. The design can then be cut out or saved as data.

Direct Cut

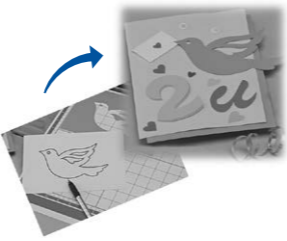
An original illustration can be scanned and its outline can be cut out.



Scan to Cutting Data

An original illustration can be scanned, converted to cutting lines for cutting/ drawing with this machine, then saved as data.

\* Refer to the Operation Manual for detailed instructions.



Direct Cut (Scan and Cut Material's Pattern(s))

1

Select "Scan".

2

Select "Direct Cut".

3

Select the destination for the cutting data.

4

Touch key to specify the scan settings.

5

Attach the original (stamped paper, printed paper/sticker, etc.) to the mat.

6

For smooth feeding, align the top of the mat with the guides on the right and left sides of the feed slot and insert it under the feed rollers.

7

Lightly place your hand on the center of the mat and gently push it forward while pressing the "Feed" button on the operation panel.

8

Touch the "Start" key to start scanning.

9

Touch the "OK" key.

10

After selecting the area to be cut out, touch the "Preview" key and then "OK" key.

11

Touch the "OK" key.

12

Touch "Please select" key then select "Cut" in the preview screen.

13

Touch the "Start" key to start cutting.

14

When cutting is finished, touch the "OK" key.

15

Peel off the material.

16

Use the spatula to peel off the cutout pattern.

Test/Trial Cut (For Desired Cutting Results)

Before working on your actual project, using your choice of material we recommend that you test cut or test the pen/ink (for draw function) to make sure that you'll get the desired results. If you achieved your desired results, continue with your project using the same materials you tested.

1

After selecting "Cut" in the preview screen, touch the "Test" key.  
▶ The test pattern will appear at the bottom right.

2

Make sure that the test pattern does not overlap the pattern for your project. To change the test pattern location, touch .

3

After making the desired changes, touch the "OK" key.

4

Touch the "Start" key to start test/trial cutting.

5

Touch the "Test again" key.

6

When "Test/Trial Cut" is done, without feeding out the mat, peel off the cutout and check the "Test/Trial Cut" results.

7

If the result of the "Test/Trial Cut" is good (clean and no-fray) continue cutting your project by touching the "Start" key on the screen.

8

If you are not satisfied with the "Test/Trial Cut" result, follow the pressure settings procedure from 5, and perform "Test/Trial Cut(s)" until you have the best result.

9

Touch to move the test pattern in a different location.

10

Touch to adjust the cutting pressure.

11

Referring to the "Test/Trial Cut" Result table below, adjust the cutting pressure according to the cutting results, and then touch the "OK" key.

12

Touch the "Start" key to start test/trial cutting.

13

If the result of the "Test/Trial Cut" is good (clean and no-fray) continue cutting your project by touching the "Start" key on the screen.

14

If the material could not be cut cleanly, return to step 5 and perform "Test/Trial Cut" again.

"Test/Trial Cut" Result	Adjustment Operation
Part of the material is not cut.	Pressure too light: Touch  in the settings screen once to increase the pressure.
The entire pattern is not cut.	Pressure too light: Touch  in the settings screen once to increase the pressure.
There are cutting lines completely through the mat.	Pressure too strong: Touch  in the settings screen once to decrease the pressure.

■ Getting More Out of ScanNCut

The following website provides methods for getting more out of your ScanNCut using CanvasWorkspace application, procedures for customizing pattern data, and much more.



CanvasWorkspace

<http://CanvasWorkspace.Brother.com>

